

Dual Sensor Camera

DC-TH2011W

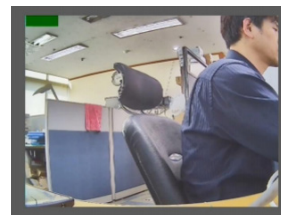
- Dual Sensor (Thermal+Sensor) IP Camera
- 3Mode Display Support (Visual / Thermal / Overlay)
- Onvif-compliant
- Special Aluminium Housing for Outdoor Use
- Up to 10 Points of Temperature Probing
- Visual / Thermal Overlay Mode
- Alarm Activation by Temperature Threshold
- Full Waterproof (IP66) Outdoor Housing
- Sun Shield, Heater, Blower (option)
- IR Lamp (option)



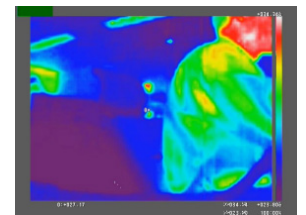
SPECIFICATIONS

Feature		
Thermal Image	IR Sensor Frame Rate	< 9 Hz
	IR Sensor Resolution	80 (h) x 60 (v) Pixel
	Spectral Range	LWIR, 8 to 14µm
	Field of View (FOV)	51° HFOV, 63.5° Diagonal (f/1.1 Silicon Double)
	Temperature Sensitivity	< 50 mK (0.05°C)
	Temperature Range	0°C ~ 120°C
Visible Image	CMOS Sensor	1/3.2 inch Sony CMOS Progressive Scan
	Effective Pixels	1280 (H) x 960 (V) : 1.23M
	Frame Rate	30fps
	Resized Resolution	720 (h) x 540 (v) Pixel / 800 (h) x 600 (v) Pixel
	Multi User Access	8 (RTSP Streaming)
Others	Alarm Out	1 port (Dry contact, relay out)
	Operating Temperature	0°C +50°C (32°F +122°F)
	Power	PoE(802.3.af), DC12V
	Power Consumption	3.9W
	IP Level	IP66
	Body & Color	Aluminium with UV Protect Powder Coating & Cool Gray 1C
	Dimension (WxHxD) - Outside	142 x 128 x 322 (mm)
	Dimension (WxHxD) - Inside	70 x 75 x 160 (mm)
Weight	1.96kg	

Visual/Thermal Overlay Mode



Visual Image
Stream#1 @ 1.2MP



Thermal Image (Color)
Stream#2 @ 80 x 60



Overlaid Image (Color)
Stream#3 @ 720 x 540

Case Study



Tunnel



Coal Conveyor



Valve



Garbage Yard



Waste Disposal Plant



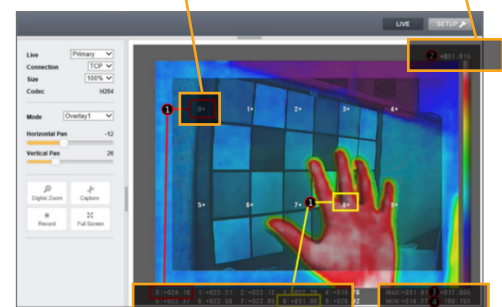
Warehouse

Multiple Points of Temperature Measurement

Up to 10 Points of Simultaneous Temperature Probing

Probe Points Up to 10

Max Temperature



Temperature Status

Min & Max Temperature
+Contrast Ratio